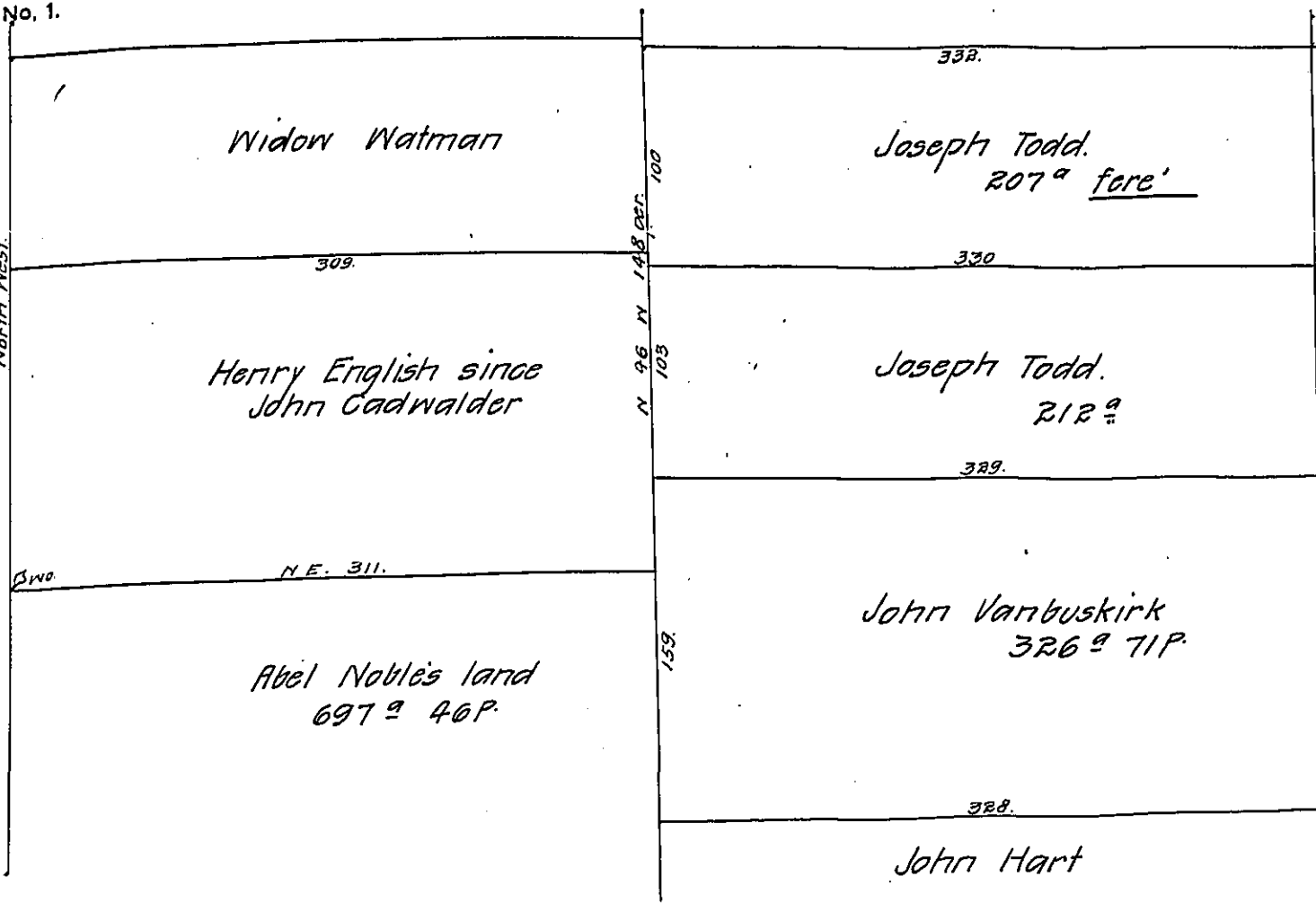


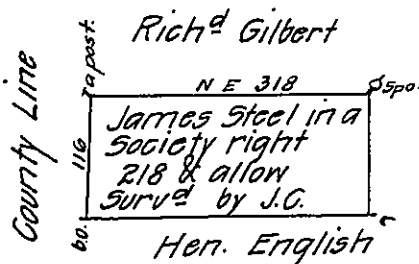
FORM No. 1.

Philad & Courty  
County Line



Jasper Lawrence's Land.

Part of Warminster Township.

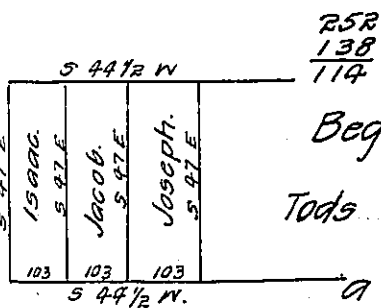


310  
120  
37200 / 232 1/2  
348

136  
120

136  
310  
1360  
408  
42160 / 263 1/4  
1058 232  
0 495 3/4 165 1/4  
165 1/4

Jr<sup>d</sup> Cadwalder's Land.



Begin<sup>d</sup> at a Strub Span Oak in a Swamp then S 47 E at 26  
Tods Corner post then by his land and 110 crossd the road at 136  
a post by Tods fence then S.W. at 5 an old Corn<sup>r</sup> W.O. at 60p  
at 48 a wh. o.  
crossd the road to South at 114 a d<sup>d</sup> bl. o. 3 p<sup>r</sup> on the right the  
Cov- is S 44 1/2 W the dist to the County line is 310 per then on  
the County Line at 116 a bl. o a Corner of Ed. Lloyds Land then  
on ye County Line by it at 136 a bl. Oak Corner then by sd  
Johns other land at 256 in all on the County Line to a  
Corn<sup>r</sup> ~~bl.~~ o, then by Nicholas Gilberts land N. 44 1/2 E to a  
span: oak then from it S 44 1/2 W at 103 a post then S. 47 E.

IN TESTIMONY that the above is a copy of the original remaining on file in the Department of Internal Affairs of Pennsylvania, made conformably to an Act of Assembly approved the 16th day of February, 1833, I have hereunto set my Hand and caused the Seal of said Department to be affixed at Harrisburg, this thirtieth day of September 1910.

*Henry Houser*

Secretary of Internal Affairs.

o A.  
17 A.